

Bottom View

Note:

- \* Materials :  
Insulator: Thermoplastic UL94 V-0  
Contacts: Copper Alloy  
Shell: Steel with Nickel plated  
Latch: Stainless Steel with Nickel plated  
EMI Spring: Stainless Steel

Ordering Information:

**5579** - **I**- **24**- **1**- **E**  
1 2 3 5

1. **Connector Series**

2. **(T) Contact Plating**

- T = 16 .30µ" selective gold over nickel Recommended Finish

3. **(XX) Number of circuits**

- Available in 24 circuits

5. **(E) Packing Options**

- E = 2. Reel

6

5

4

3

SYM

NAME

DATE

REVISIONS

DATE

4/24-15'

4/24-15'

4/28-15'

4/28-15'

DRAWN BY:

Ellie

ENGINEER:

Sun

CHECKED BY:

Eisley

APPROVED BY:

Eisley

UNIT: mm / inch

TOLERANCE

UNLESS OTHERWISE SPECIFIED

X ± 0.25/.010 X\* ± 3

XX ± 0.13/.005 X\* ± 2

XXX ± 0.05/.002 XX\* ± 1\*

TITLE: USB TYPE C

BOARD MOUNT PLUG

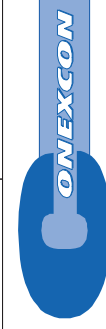
MATERIAL:

FINISH:

Halogen-Free

Lead Free Process

RoHS Compliant



DRAWING NO.

SCALE

4 / 1

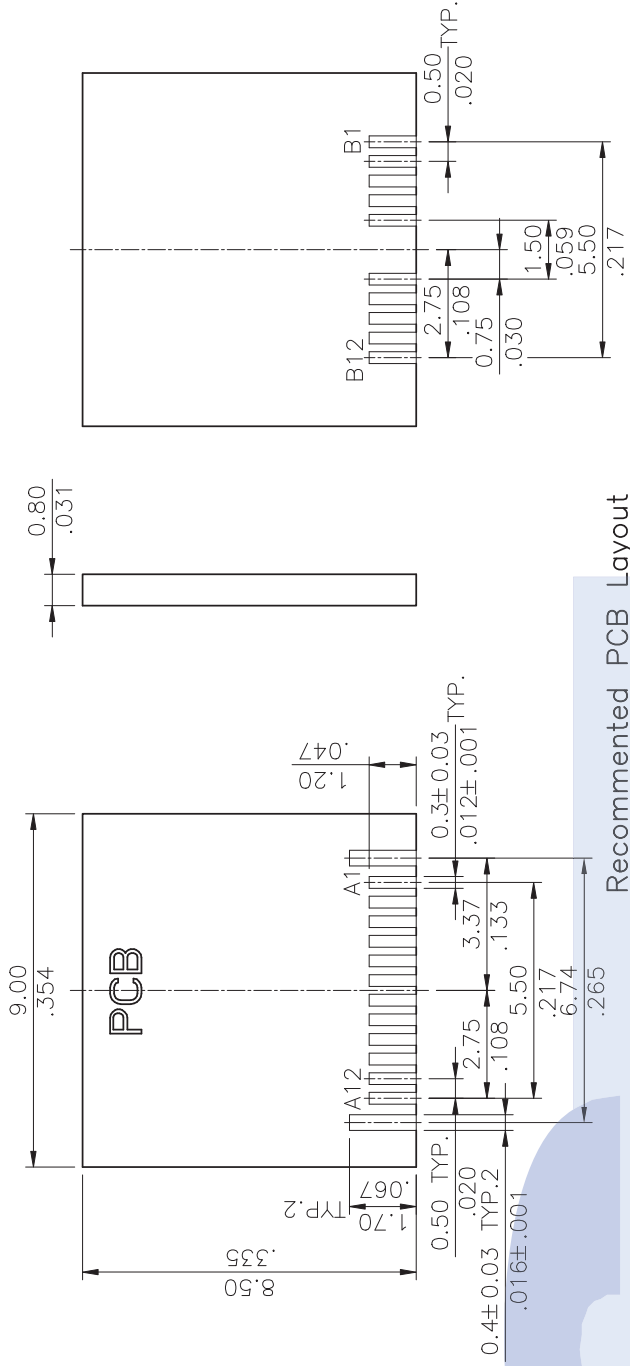
SHEET

1

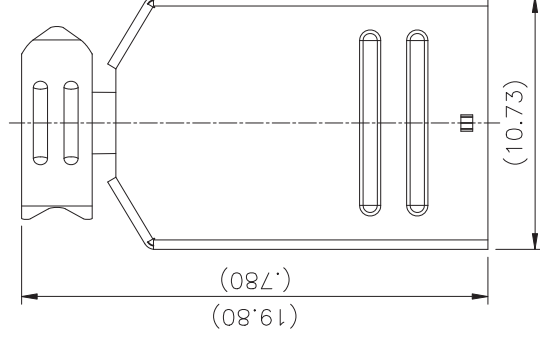
OF

2

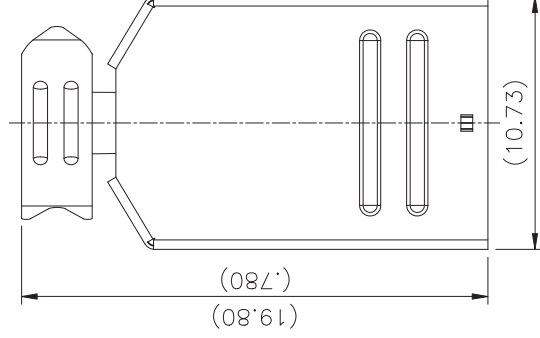
PART NO. **5579 Series**



Recommended PCB Layout  
Tolerance ±0.08



Shell: top view



Shell: Bottom view

RoHS Compliant

\* Pin Assignment

| Pin NO. | Signal name | Pin NO. | Signal name |
|---------|-------------|---------|-------------|
| A1      | GND         | B1      | GND         |
| A2      | SSTXp1      | B2      | SSTXp2      |
| A3      | SSTXn1      | B3      | SSTXn2      |
| A4      | VBUS        | B4      | VBUS        |
| A5      | CC1         | B5      | CC2         |
| A6      | Dp1         | B6      |             |
| A7      | Dn1         | B7      |             |
| A8      | SBU1        | B8      | SBU2        |
| A9      | VBUS        | B9      | VBUS        |
| A10     | SSRXn2      | B10     | SSRXn1      |
| A11     | SSRXp2      | B11     | SSRXp1      |
| A12     | GND         | B12     | GND         |

|     |      |                    |           |                     |          |                                      |                                    |
|-----|------|--------------------|-----------|---------------------|----------|--------------------------------------|------------------------------------|
| 6   |      |                    |           | DATE                | 4/24-15' | UNIT: mm / inch                      | TITLE: USB TYPE C BOARD MOUNT PLUG |
| 5   |      | DRAWN BY: Ellie    |           |                     | 4/24-15' | TOLERANCE UNLESS OTHERWISE SPECIFIED |                                    |
| 4   |      | ENGINEER: Sun      |           |                     | 4/28-15' | X ± X' ± 1"                          | MATERIAL:                          |
| 3   |      | CHECKED BY: Easley |           |                     | 4/28-15' | XX ± X' ±                            | FINISH:                            |
| SYM | NAME | DATE               | REVISIONS | APPROVED BY: Easley | 4/28-15' | XXX XX ± XX ±                        |                                    |



PART NO. 5579 Series  
DRAWING NO.  
SCALE  
SHEET 2 OF 2