

# DVI SIDE ENTRY PCB SOCKET CONNECTOR



## 5637 SERIES. DVI PCB socket connector.

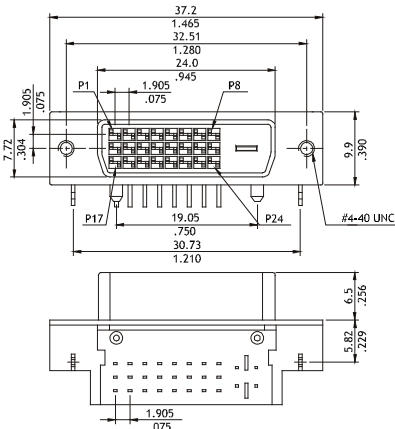
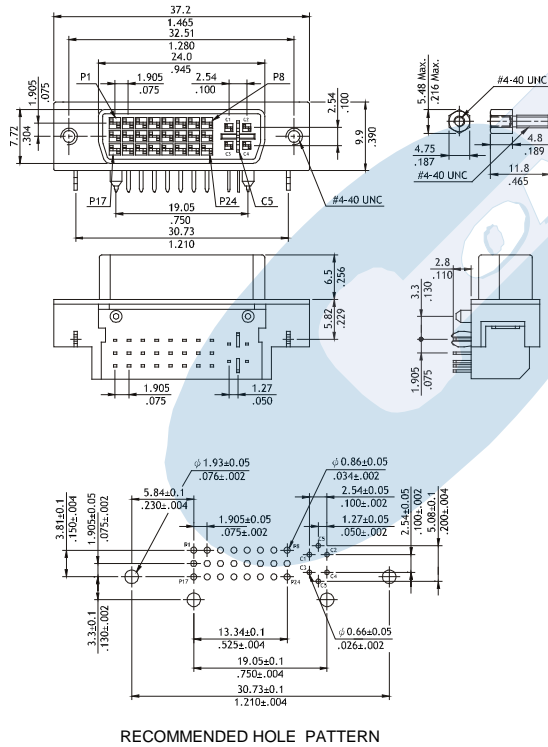
### General Features

- Available in 24 circuits (DVI – D digital) and 29 circuits (DVI – digital and analog)
- Contact area: selective gold plating over nickel
- Solder area: tin plating over nickel
- With board lock and different hardware options

### Materials

- Insulator: Glass filled Thermoplastic PBT, UL 94 V-0
- Contact: Brass
- Shell: Zinc nickel plated
- Boardlock: Brass, tin plated
- Operating temperature. -25°C to +85°C
- RoHS compliant

### Dimension Information



### Electrical Features

- Voltage rating: < 40 V
- Current rating: 3 A
- Contact resistance: < 20 mΩ
- Dielectric withstanding Voltage: 500 V AC/minute
- Insulation resistance: >1000 MΩ

### Mechanical Features

- Receptacle contact retention to housing: < 0.45 Kgf
- Plug contact retention to housing: > 4.50 Kgf
- Mating force: < 4.00 Kgf
- Unmating force: > 1.00 Kgf
- Durability: 100 Cycles

**5637 - T- XX- C R**  
 1 2 3 4 5

### 1. Connector Series

### 2. Plating Options

- T = 13. Selective Gold Flash over 1.27 μ Ni. RECOMMENDED FINISH
- T = 15. 0.38 μ Selective Gold over 1.27 μ Ni.
- T = 16. 0.76 μ Selective Gold over 1.27 μ Ni.

### 3. Circuit Size

- XX = 24 contacts (Digital)
- XX = 29 contacts (Integrated D /A)

### 4. Hardware Options

- C = 0. Version w/o Nut and Grounding tap
- C = 1. Version with Nut 4-40 UNC and Grounding tap

### 5. Insulation Colour

- R = 1. White
- R = 2. Black
- R = 3. Ivory